

Connecting to the Terminal Server

| | |
|---|---|
| Terminal Server | 2 |
| Things to be remembered before connecting to Hydra..... | 2 |
| Why connect to the Hydra Terminal Server? | 2 |
| Windows | 2 |
| Connecting to Remote Desktop | 2 |
| UNIX..... | 5 |

Terminal Server

Wikipedia defines a **terminal server** as a specialized computer which aggregates multiple communication channels together. Terminal servers are divided into two models which are:-

- 1) Multiple entities connecting to a single resource.
- 2) A single entity connecting to multiple resources.

In the ECS terminal server, multiple entities can connect to a single resource. At the College of ECS, the server named, Hydra, are single resource which provides multiple communications to several entities.

Things to be remembered before connecting to Hydra

- Make sure you are connected to the internet*
- *Internet connection is required to connect to Hydra.

Why connect to the Hydra Terminal Server?

Using the Hydra terminal server, students can have access to ECS resources and software from off campus using their home PC's or their laptops.

Some of the software packages provided by ECS on the Hydra terminal server are:

- Microsoft Office 2010
- Matlab R2013a
- Advanced Design System 2012.08
- Cadence SPB Switch Release
- Visual Studio 2012
- Logic Works 5
- Fluent Inc. Products
- AutoCAD

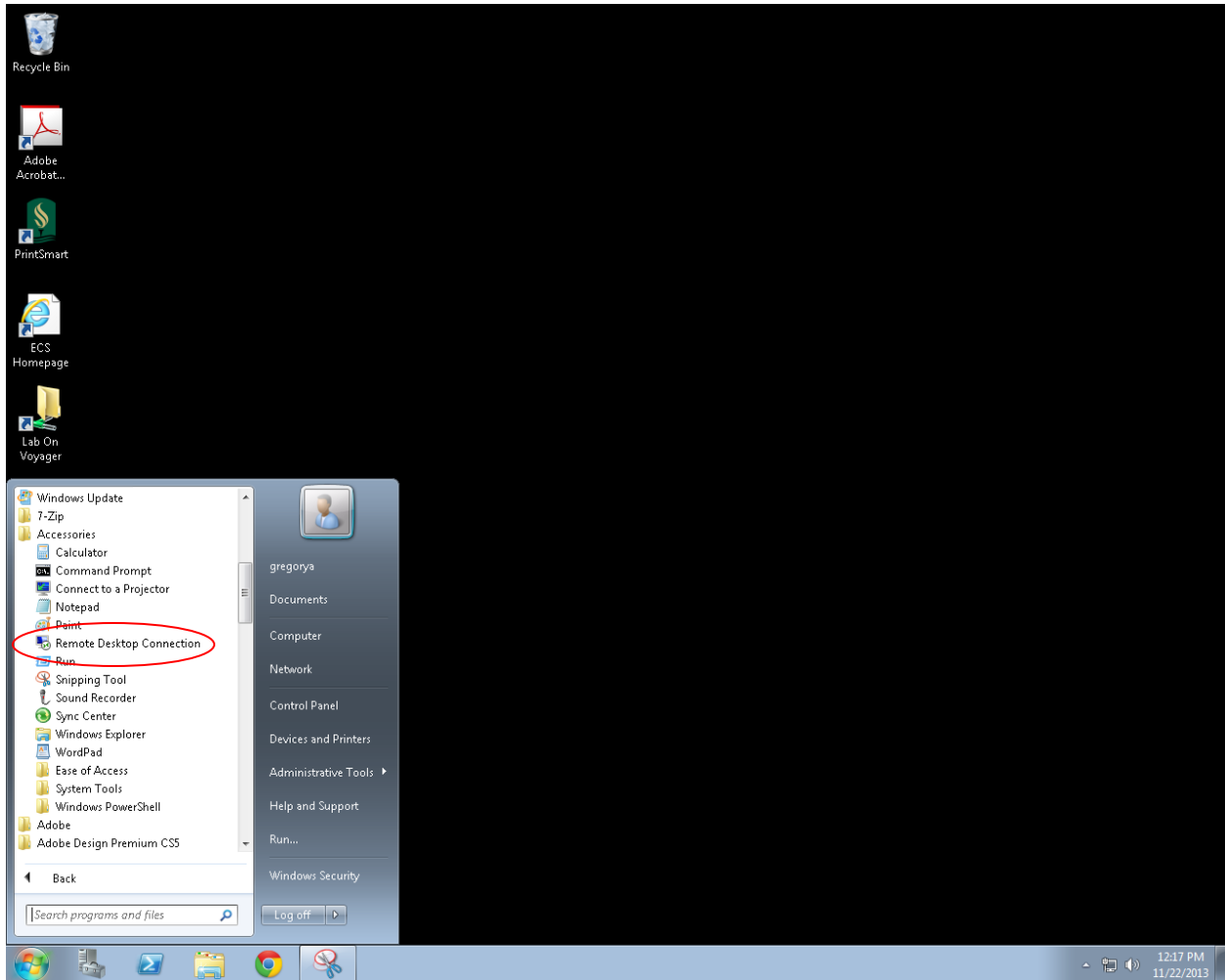
And many other useful softwares for Engineering and Computer Science students.

Windows

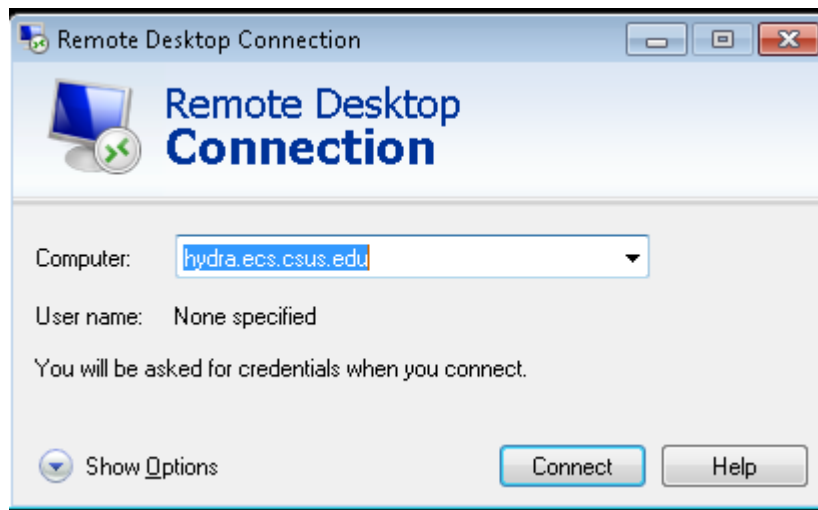
Connecting to Remote Desktop

Step 1: Start → All Programs → Accessories → Remote Desktop Connection.

Terminal Server



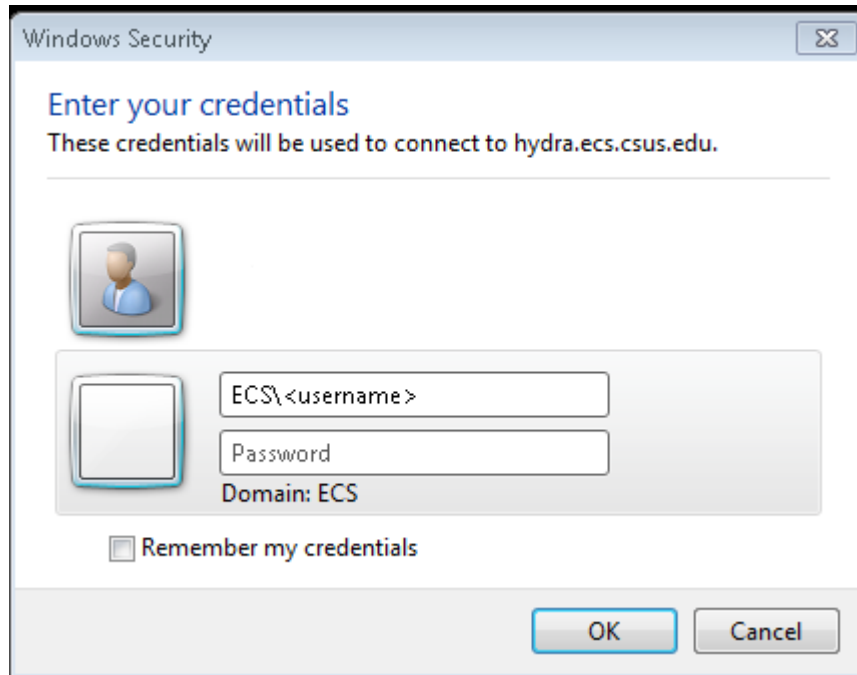
Step 2: Type in computer name: *hydra.ecs.csus.edu*



Terminal Server

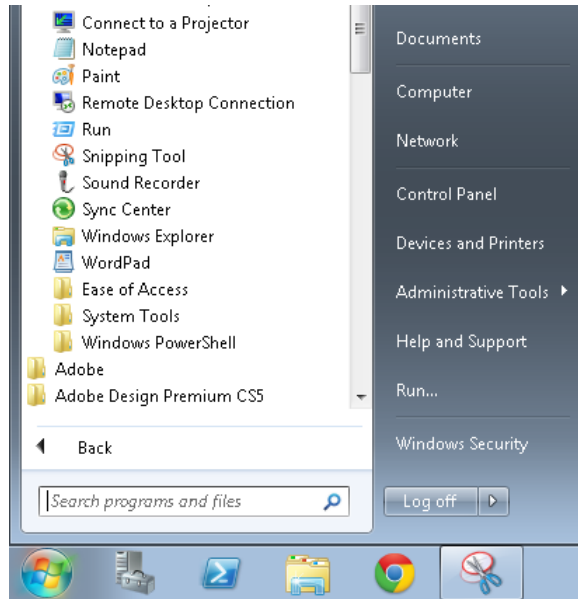
Step 3:

- Following screen appears
- Connect using ECS Login Name and Password.
- User Name: ECS\<<User Name>
Password: *****



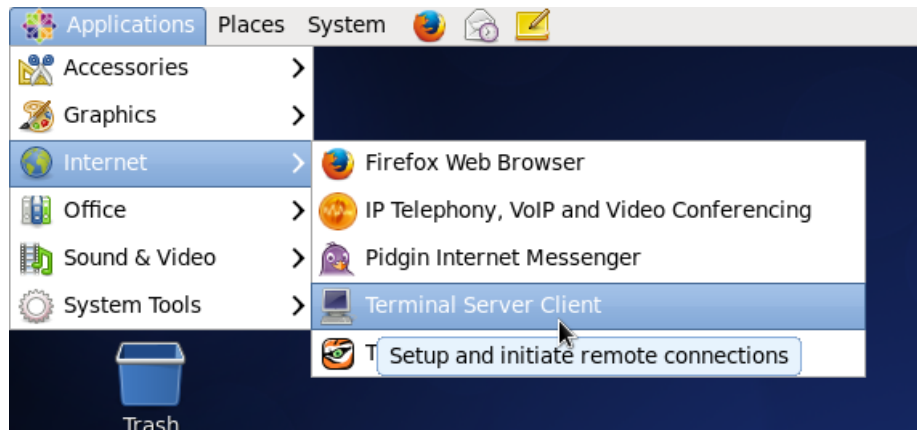
Note: When you are done with using the Terminal Server Client. Do not close the Window with the 'X' sign. Go to **Start** click **Log Off<username>**

Terminal Server



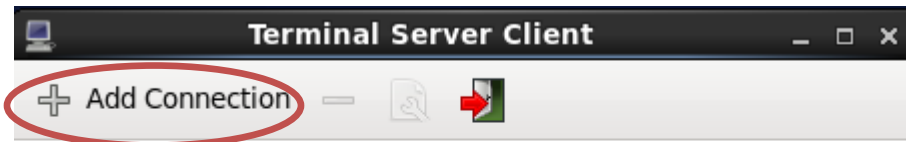
UNIX

Step 1: Click on Application → Internet → Terminal Server Client.

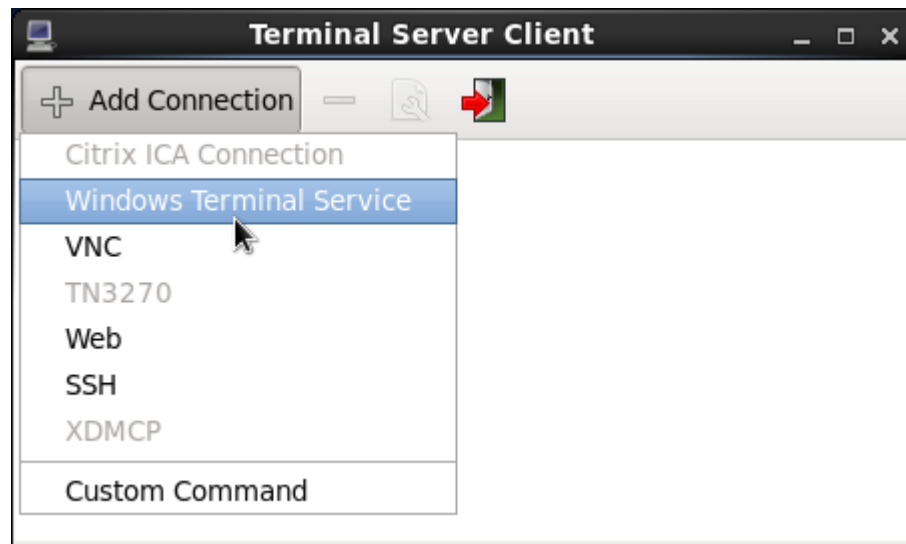


Step 2: Click on “Add Connection.”

Terminal Server



Step 3: A drop down menu will then appear and from that drop down menu choose “Window Terminal Service.”



Step 4: For the Name type in Hydra, Host type in hydra.ecs.csus.edu, Domain type in ecs.csus.edu, make sure the Color Depth is 24 and then click OK.

Terminal Server

Edit Connection

General

Name: Hydra

Reconnect Policy: Prompt For Reconnect After Error

Autostart at login time

Add to Favorites

Details

Host: hydra.ecs.csus.edu

Username:

Password:

Domain: ecs.csus.edu

Fullscreen Window

Custom Window Size: 1280 x 1024

Enable sound forwarding

Client Hostname:

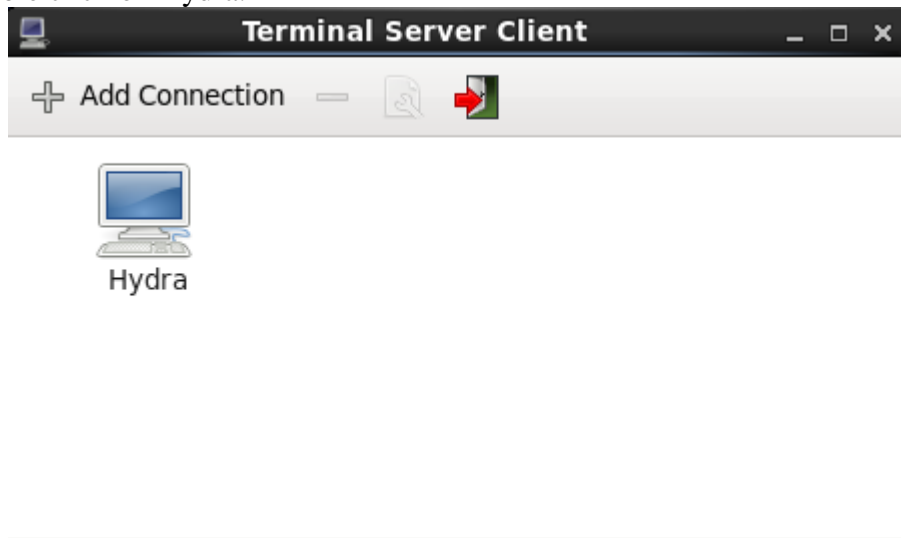
Advanced Options

Connection Type: Default

Color Depth: 24

Cancel OK

Step 5: Then double click on Hydra.



Step 6: Finally, enter your ECS username and password when prompted.

Terminal Server

Document Created by: - Wayne Dias 16th April 2008

Last edited by: - Ashley Gregory 04 March 2014