

# Bentley Software Activation Tutorial

PLEASE NOTE: This process must be done every time the user logs into a system.

Step 1. Click on the **“Start Menu”**(Figure 1)



Figure 1

Step 2. Click **“All Programs”** (Figure 2)

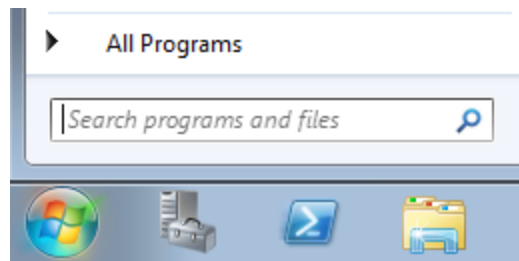


Figure 2

Step 3. Click on the **“Bentley”** folder and then click on the **“SewerCAD V8i”** folder (Figure 3)

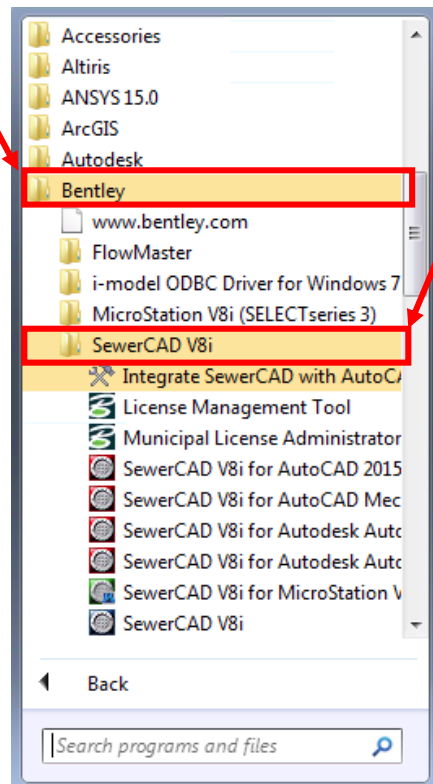


Figure 3

Step 4. Within the “**Bentley**” folder, double click the application “**Municipal License Administrator**” (Figure 4)

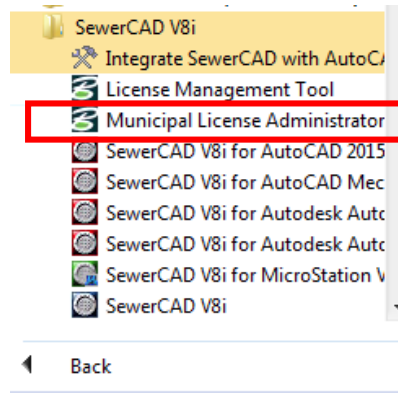


Figure 4

A window like the one below will appear on the screen (Figure 5)

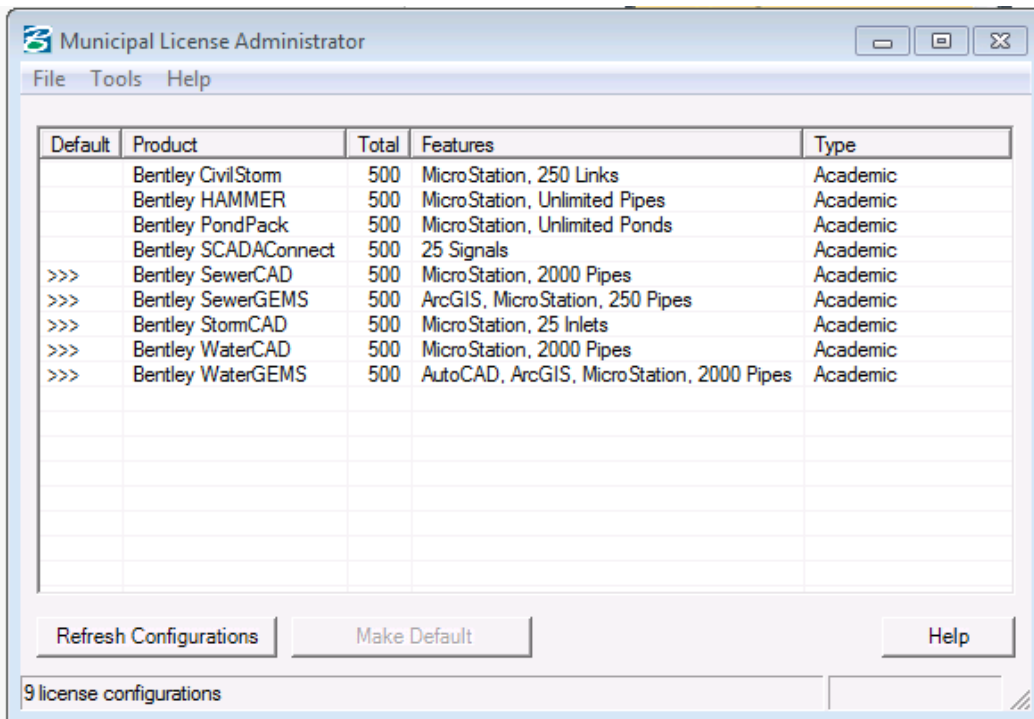


Figure 5

Step 5. Under the “**Product**” column, select “**Bentley SewerCAD**” software, then click “**Make Default**” (Error! Reference source not found.)

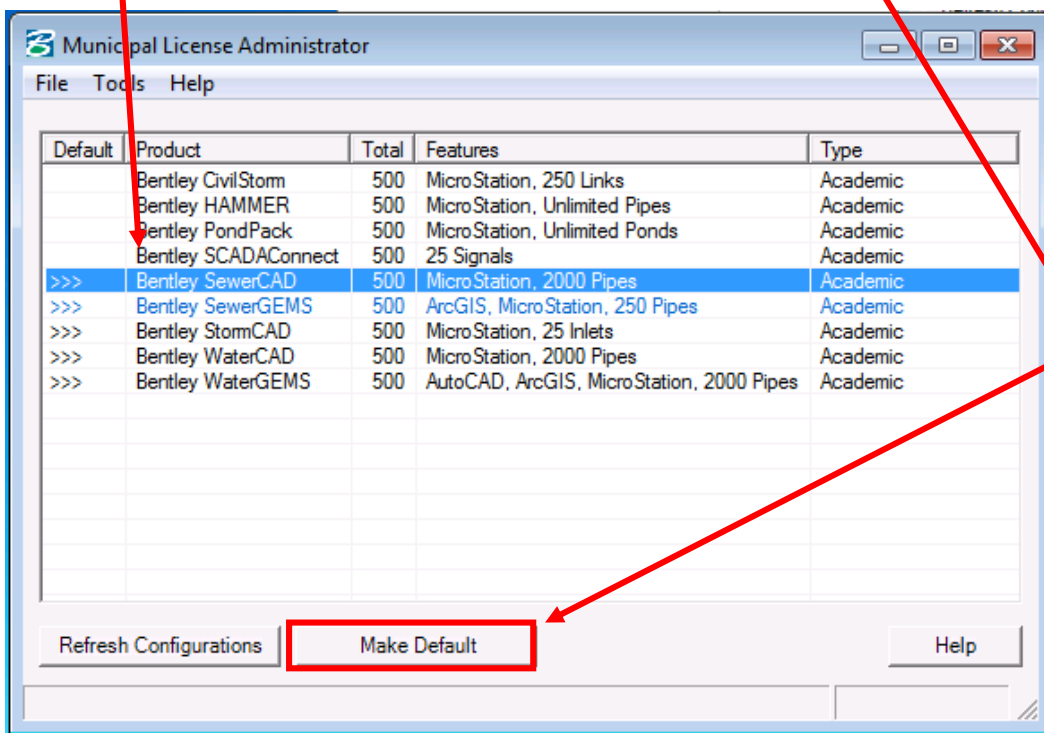


Figure 6

Step 6. Select “**Bentley SewerGEMS**”, and then click “**Make Default**”. (Figure 7)

Step 7. Select “**Bentley StormCAD**”, and then click “**Make Default**”. (Figure 7)

Step 8. Select “**WaterCAD**”, and then click “**Make Default**”. (Figure 7)

Step 9. Select “**Bentley WaterGEMS**”, and then click “**Make Default**” (Figure 7)

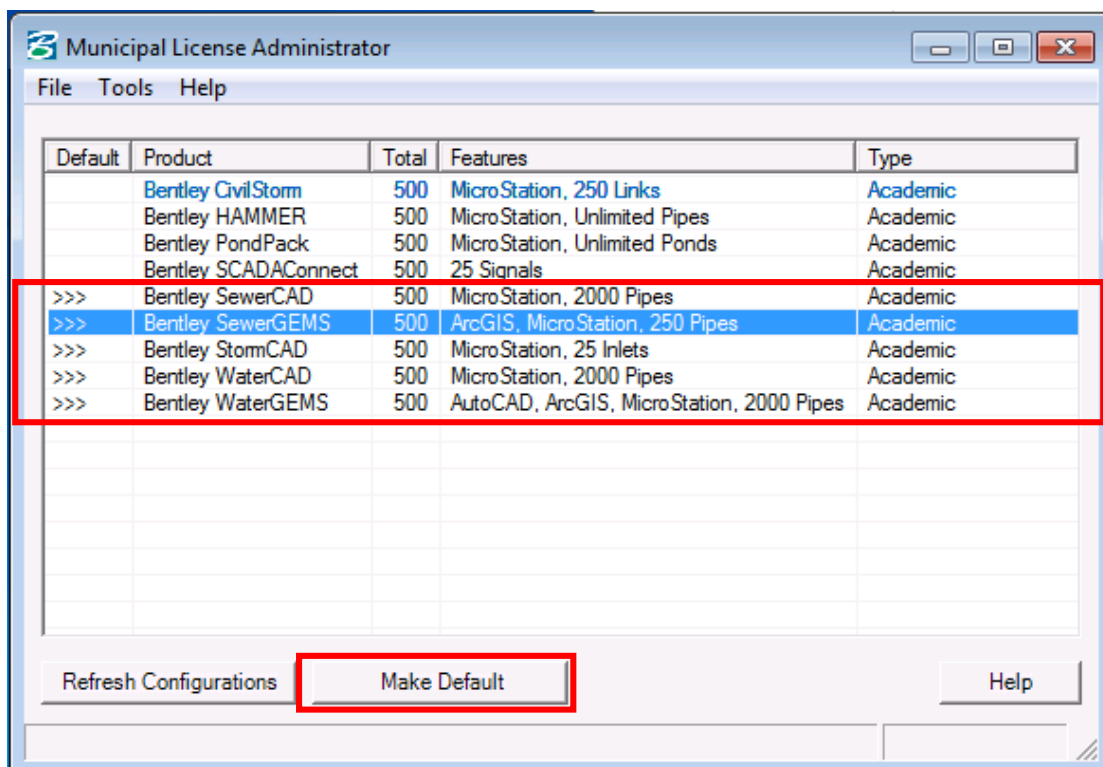


Figure 7

Step 10. Close the "**Municipal License Administrator**" application.

Step 11. Run the software you wish to use, the License should be activated. By clicking Help >About in any of the Bentley products, you can verify that the license is activated. It should say "activated" and not "Trial".**Error! Reference source not found.**