

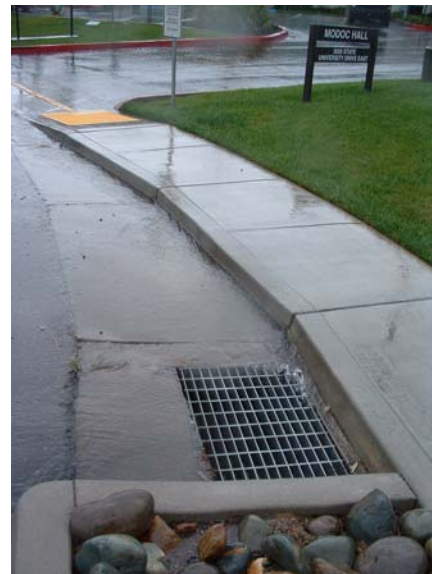
Campus Research Opportunity

Sac State Stormwater Planning Project

In this project, the potential for retrofitting the campus with stormwater Best Management Practices (called BMPs) will be assessed. At the present time, stormwater from the campus is collected and discharged to the American River untreated. BMPs are treatment devices or activities that reduce the pollutant load from stormwater. Examples of common BMPs are biofiltration swales and strips, settling basins, infiltration basins, and filters. The goal of this project is to start a list of improvements to the campus infrastructure that can be implemented over time. This work directly supports campus planning efforts to comply with its Phase II stormwater permit.

Tentative Scope:

- Review stormwater regulations as they apply to the campus and the campus permit.
- Review stormwater BMP information and design criteria, particularly those relating to Low Impact Development (LID).
- For an assigned section of campus, examine existing drainage patterns and facilities and facilities proposed as part of Destination 2010.
- Apply knowledge of BMPs and propose improvements in the physical facilities or operations that would reduce stormwater flows, pollutant concentrations, or both.
- Prepare a report of findings and recommendations.
- Oral presentation.



Benefits: Learn about stormwater pollution control technologies and when they are required. Gain experience in applying BMPs in a real setting. In accordance with federal and state law, stormwater BMPs are becoming an integral part of all site planning and engineering activities.

Course Credit: CE 199E (technical elective) or CE 199.

Prerequisites (*either* one of the following):

1. CE 170 taken in previous semester, or
2. CE 137 taken in a previous semester and CE 170 taken concurrently

For more information, contact Dr. Johnston

johnston@ecs.csus.edu